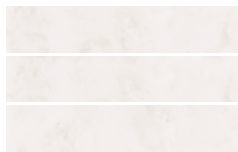


BIANCO



188891 - 8x41.3"x16"

Nat - Glossy

PM - 60,00

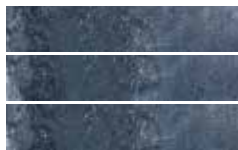


188901 - 16,5x41.6"½x16"

Vaschetta Nat - Glossy

PM - 60,00

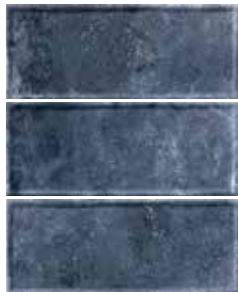
BLU



188898 - 8x41.3"x16"

Nat - Glossy

PM - 60,00



188908 - 16,5x41.6"½x16"

Vaschetta Nat - Glossy

PM - 60,00

GRIGIO



188892 - 8x41.3"x16"

Nat - Glossy

PM - 60,00

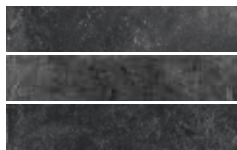


188902 - 16,5x41.6"½x16"

Vaschetta Nat - Glossy

PM - 60,00

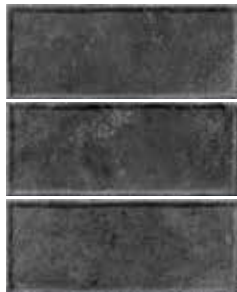
NERO



188899 - 8x41.3"x16"

Nat - Glossy

PM - 60,00



188909 - 16,5x41.6"½x16"

Vaschetta Nat - Glossy

PM - 60,00

ROSA



188894 - 8x41.3"x16"

Nat - Glossy

PM - 60,00



188904 - 16,5x41.6"½x16"

Vaschetta Nat - Glossy

PM - 60,00

OCRA



188895 - 8x41.3"x16"

Nat - Glossy

PM - 60,00



188905 - 16,5x41.6"½x16"

Vaschetta Nat - Glossy

PM - 60,00

DECORO BLOOM



192421 - 8x41.3"x16"

Bloom Nat - Glossy

PM - 63,00

VERDE



188896 - 8x41.3"x16"

Nat - Glossy

PM - 60,00



188906 - 16,5x41.6"½x16"

Vaschetta Nat - Glossy

PM - 60,00

PEZZI SPECIALI . SPECIAL PIECES



Bullnose 8x41.3"x16" Nat - Glossy PL - 14,00





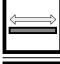



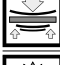





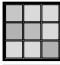

193021 - Bianco 193025 - Ocra 193028 - Blu 193024 - Rosa
193022 - Grigio 193026 - Verde 193029 - Nero

RIVESTIMENTO IN GRES FINE PORCELLANATO COMPLETAMENTE VETRIFICATO

FULLY VITRIFIED PORCELAIN STONEWARE WALL TILES

Conforme alla norma EN 14411 1 Appendice G gruppo B1a Conforme alla norma ISO 13006 Appendice G gruppo B1a

Compliant with standards EN 14411 annex G group B1a Compliant with standards ISO 13006 annex G group B1a

CATTERISTICHE TECNICHE		Norma	Valore prescritto dalle norme	Valore Sichenia
Technical features		Standard	Values required by the standard	Sichenia values
	Lunghezza e larghezza Length and width	UNI EN ISO 10545/2	Rettificato . Rectified ± 0,3 % (max ± 1 mm)	Conforme Compliant
	Spessore Thickness	UNI EN ISO 10545/2	Rettificato . Rectified ± 5 % (max ± 0,5 mm)	Conforme Compliant
	Rettilinearità spigoli Warpages of edges	UNI EN ISO 10545/2	Rettificato . Rectified ± 0,3 % (max ± 0,8 mm)	Conforme Compliant
	Ortogonalità Wedging	UNI EN ISO 10545/2	Rettificato . Rectified ± 0,3 % (max ± 1,5 mm)	Conforme Compliant
	Planarità Flatness	UNI EN ISO 10545/2	Rettificato . Rectified ± 0,4 % (max ± 1,8 mm)	Conforme Compliant
	Assorbimento d'acqua Water absorption	UNI EN ISO 10545/3	≤ 0,5 %	≤ 0,1 %
	Resistenza alla flessione Bending strength	UNI EN ISO 10545/4	≥ 35 N/mm ²	≥ 35 N/mm ²
	Resistenza aall'abrasione profonda Resistance to deep abrasion	UNI EN ISO 10545-6	≤ 175 mm ³	-
	Sforzo di rottura Breaking strength	UNI EN ISO 10545/4	≥ 1300 N	spess. 10mm: ≥ 1'300 N
	Dilatazione termica lineare tra 20° e 100° C Linear thermal expansion between 20° and 100° C	UNI EN ISO 10545/8		< 9 (MK-1)
	Resistenza agli sbalzi termici Thermal shock resistance	UNI EN ISO 10545/9	Test superato in accordo con ISO 10545-1 Pass according to EN ISO 10545-1	Nessuna alterazione No alteration
	Resistenza al gelo Frost resistance	UNI EN ISO 10545/12	Test superato in accordo con ISO 10545-1 Pass according to EN ISO 10545-1	Nessuna alterazione No alteration
	Resistenza alle macchie Resistance to staining	UNI EN ISO 10545/14	Classe dichiarata Declared Class	5 resistente . resistant
	Resistenza ai prodotti chimici di uso domestico e agli additivi per piscina . Resistance to household chemicals and swimming pool salts		Classe minima B Minimum Class B	A
	Resistenza a basse concentrazioni di acidi e alcali Resistance to low concentrations of acids and alkalis	UNI EN ISO 10545/13	Classe dichiarata Declared Class	LA
	Resistenza ad alte concentrazioni di acidi e alcali Resistance to high concentrations of acids and alkalis		Classe dichiarata Declared Class	HA
	Stonalizzazione Shading			V3
	Fuga minima consigliata (*) Recommended minimum joint	indoor		+/- 5mm
		outdoor		+/- 5mm

* Salvo diversa indicazione dei Codici di Posa Nazionali. La larghezza delle fughe deve comunque essere decisa dalla Direzione Lavori.

* The width of grout joints must be established by the installation supervisor, unless grout widths are regulated by national laying standards.

DESTINAZIONI D'USO CONSIGLIATE - RIVESTIMENTO PARETI PER:

Examples of applications suggested - Wall coverings for:
 Domaines d'utilisation conseillés - Revêtements pour:
 Empfohlene Anwendungsbereiche - Wandfliesen Für:



ABITAZIONI
HOUSING



ALBERGHI
HOTELS



**BAR
RISTORANTI**
PUB RESTAURANTS



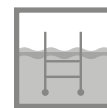
LOCALI PUBBLICI
PUBLIC SPACES



NEGOZI
SHOPS



AEROPORTI
AIRPORTS



**RIVESTIMENTO
PISCINE**
INSIDE POOL COVERING



**CENTRI
COMMERCIALI**
MALLS

SVILUPPO GRAFICO / PATTERNS

V3



16,5x41 **20** Facce differenti / Different Patterns
 8x41 **40** Facce differenti / Different Patterns
 8x41 Dec. Bloom **14** Facce differenti / Different Patterns

FORMATI . Sizes . Formats . Formate

			Pz x	m ² x	kg x	x	m ² x	kg x
	16,5x41 6 ¹ / ₂ x16"	Vaschetta Nat - Glossy	16	1,082	20,940	48	51,955	1.030
	8x41 3"x16"	Nat - Glossy / Bloom Nat - Glossy	22	0,722	17,080	60	43,296	1.045
PEZZI SPECIALI . Special pieces . Pièces spéciales . Spezialteile .	8x41 3"x16"	Bullnose Nat - Glossy	12	0,394	8,400	65	25,584	546

23

MADE IN ITALY



La riproduzione, la pubblicazione, e la distribuzione, totale o parziale, di tutto il materiale originale contenuto in questo documento sono espressamente vietate in assenza di autorizzazione da parte di Sichenia. Sichenia si riserva di modificare i prodotti senza preavviso, declinando ogni responsabilità relativa a danni diretti o indiretti derivanti da tali modifiche. I colori e le caratteristiche estetiche dei materiali illustrati nel presente catalogo sono da ritenersi puramente indicativi. Per le informazioni e i dati relativi ai codici, imballaggi e pesi occorre sempre consultare l'ultimo listino aggiornato e in vigore.

The reproduction, publication, and distribution, total or partial, of all the original material contained herein is expressly prohibited without the prior consent of Sichenia. Sichenia reserves the right to make changes to the products without notice, and shall not be liable for any direct or indirect damages arising from any changes. The colours and the aesthetic characteristics of the products shown in this catalogue are purely illustrative. For information and data concerning codes, packaging and weight always refer to the last updated price list in force.

La reproduction, la publication et la distribution, totales ou partielles, de tout le matériel original contenu dans ce document sont expressément interdites sans l'autorisation de Sichenia. Sichenia se réserve la faculté de modifier les produits sans préavis, en déclinant toute responsabilité relative à des dommages directs ou indirects dérivant d'éventuelles modifications. Les couleurs et les caractéristiques esthétiques du matériel illustré dans ce catalogue sont fournis à titre purement indicatif. Pour les informations et les données relatives aux codes, aux emballages et aux poids, il est toujours nécessaire de consulter le dernier tarif mis à jour et en vigueur.

Die vollständige oder auszugsweise Vervielfältigung, Veröffentlichung und Verbreitung des gesamten, in diesem Dokument enthaltenen Originalmaterials, ist ohne Genehmigung der Firma Sichenia ausdrücklich untersagt. Sichenia behält sich das Recht vor, die Produkte ohne vorherige Ankündigung zu ändern und haftet nicht für direkte oder indirekte, durch eventuelle Änderungen verursachte Schäden. Die Farben und ästhetischen Merkmale des im vorliegenden Katalogs abgebildeten Materials sind rein zur Information und nicht bindend. Für Informationen zu den Daten der Codenummern, Verpackungen und Gewichten siehe immer die neuste, jeweils gültige Preisliste.